



**TOTAL**  
FABRICS

# Wool Collection

Quick service - uniforms



BOOK.99.00028



# Wool collection

## Blends uniforms

### Book 28

Article	Composition (Finish)	Cardcode	Edition
<b>Quick service stretch</b>			
Q001	43% Wool virgin / 55% Polyester / 2% Stretch	CARD.99.0Q001	~A~
Q002	43% Wool virgin / 55% Polyester / 2% Stretch	CARD.99.0Q002	~A~
Q003	43% Wool virgin / 55% Polyester / 2% Stretch	CARD.99.0Q003	~A~
Q004	42% Wool virgin / 55% Polyester / 4% Stretch	CARD.99.0Q004	~A~
Q005	43% Wool virgin / 55% Polyester / 2% Stretch	CARD.99.0Q005	~A~
Q008	43% Wool virgin / 55% Polyester / 2% Stretch	CARD.99.0Q008	~A~
<b>Quick service</b>			
Q006	45% Wool virgin / 55% Polyester	CARD.99.0Q006	~A~
Q007	45% Wool virgin / 55% Polyester	CARD.99.0Q007	~A~

*Your local partner...*



# Introduction

## **Quick Service fabrics for corporate identity.**

Tootal Fabrics (Holland) B.V. supplies clients with high quality fabrics for shirts, blouses and workwear to customers in more than 80 countries. The fabrics in this quick service catalogue are all perfectly suitable for corporate wear and in individual cases the fabrics can also be used for classic fashion.

We try to keep all fabrics and colours from the quick service map in wool/PES/EA in stock (max 250-300 meter each colour). The catalogue consists of 6 wool/PES/EA items with each 5 colours:

- Black, dark navy, medium blue, medium grey and dark grey.
- Weight varies from 170 gr/m<sup>2</sup> to 220 gr/m<sup>2</sup> in plain, twill and bengaline constructions.

This collection has 2 rigid items (not available in EA) as well. 1 colour of each item is available, all other colours are available with a lead time of maximum 4 weeks ex Tootal.

All of the items together represent a big part of the corporate identity requests in the market. Sampling is always available, rolls (+/- 50 meters) can be sent immediately. If not available, the lead time is approximately 4 weeks after order receipt by Tootal.

All corporate qualities have double yarn in warp and weft in order to have perfect technical properties, which is extremely important for corporate wear purposes. Testing reports are available on request.

Our customers are active in a wide range of sectors including but not limited to: bus/taxi drivers, bank employees, theme-park personal, train- and flight employees, school children uniforms, security personal etc.

In case you cannot find the requested corporate quality in this catalogue, please contact our agent or salespeople in the Netherlands for further information and possibilities.

*Your local partner...*

# TOTAL FABRICS



**Quick service**

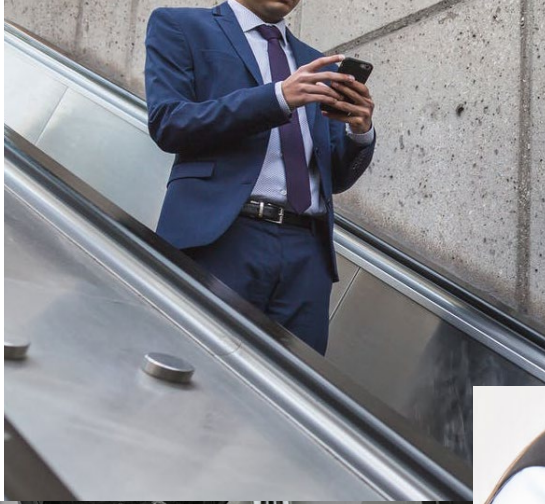


*Your local partner...*

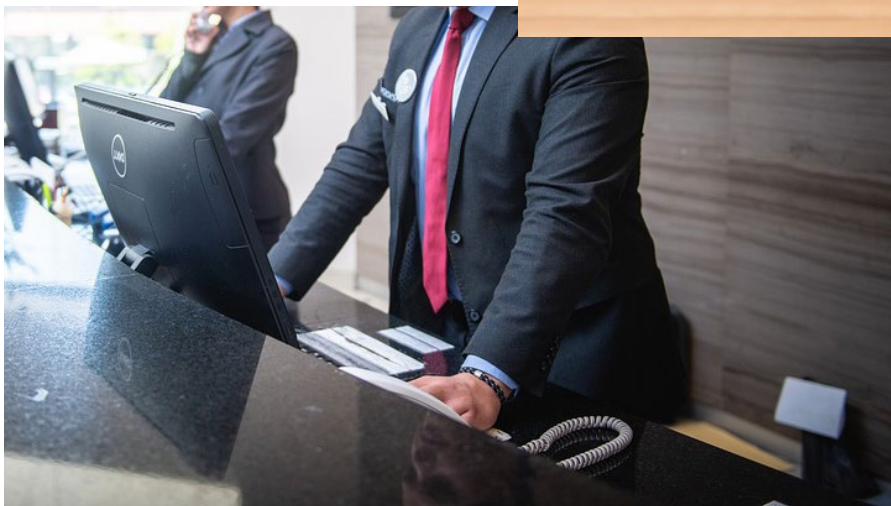
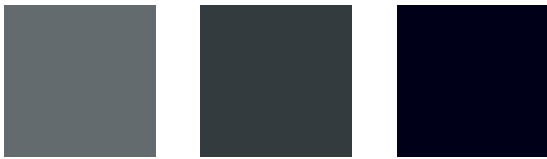
# Quick service

- Excellent wool/PES (+EA) solid fabrics in plain and twill.
- Perfect weight for corporate solutions (180-220 g/m<sup>2</sup>).
- Stock delivery per roll (+/- 50 meter) in the base colours.

# TOTAL FABRICS



## Quick service stretch



*Your local partner...*

# Quick service stretch

- Excellent wool/PES (+EA) solid fabrics in plain and twill.
- Perfect weight for corporate solutions (180-220 g/m<sup>2</sup>).
- Stock delivery per roll (+/- 50 meter) in the base colours.

Art.: Q001 - Plain

✂ 43% wool / 55% polyester /

2% stretch

24x21 - NM2/50xNM2/56

± 200 g/m<sup>2</sup>

± 148 - 150 cm

**weft stretch**



|33379







33380

33381

33382

33383



Art.: Q002 - Twill 3

✂ 43% wool / 55% polyester /

2% stretch

31,5x23 - NM2/60xNM2/56

± 220 g/m<sup>2</sup>

± 148 - 150 cm

**weft stretch**

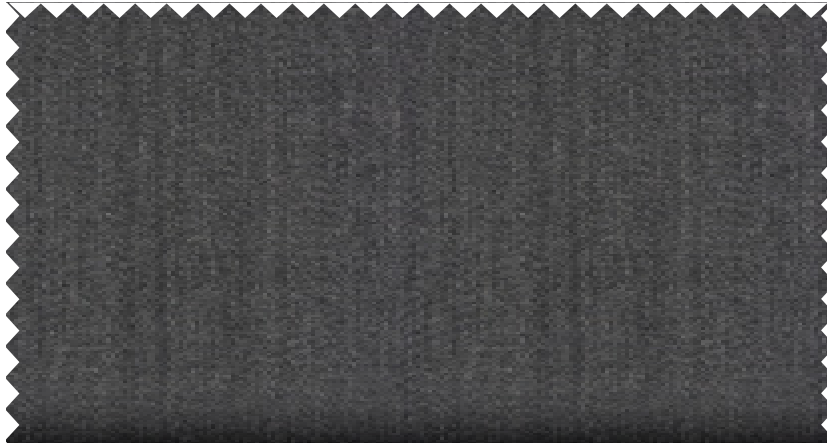


|33384





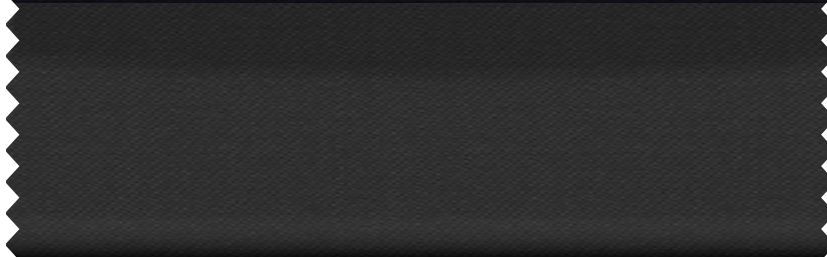
33385



33386



33387



33388



Art.: Q003 - Bengalin

✂ 43% wool / 55% polyester /

2% stretch

26x23 - NM2/56+2/60x

NM2/56+2/60

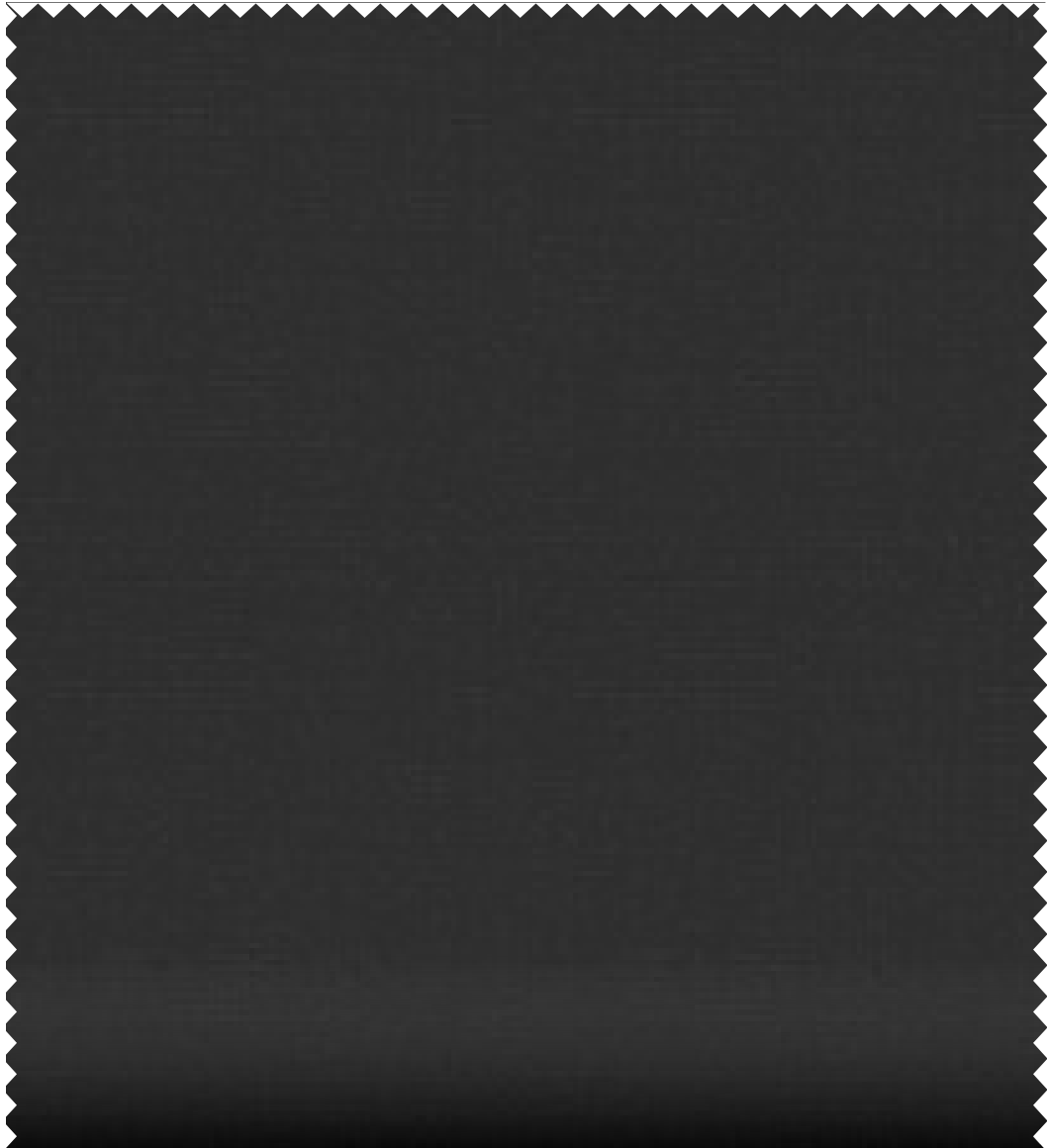
± 200 g/m<sup>2</sup>

± 148 - 150 cm

**bi stretch**



|33389





33390

33391

33392

33393



Art.: Q004 - Plain

✂ 42% wool / 54% polyester /

4% stretch

24x21 - NM2/56xNM2/56

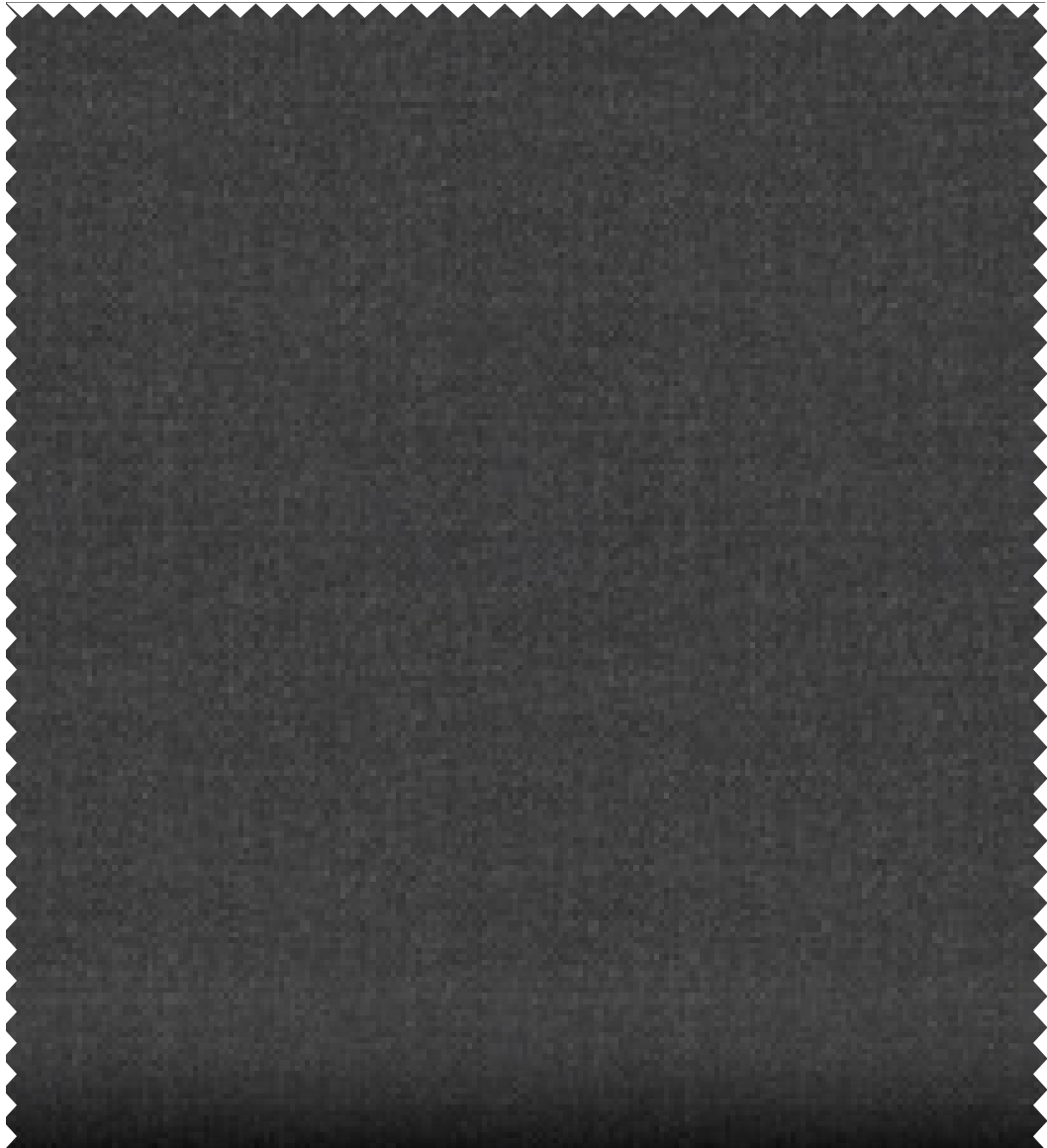
± 200 g/m<sup>2</sup>

± 148 - 150 cm

**bi stretch**

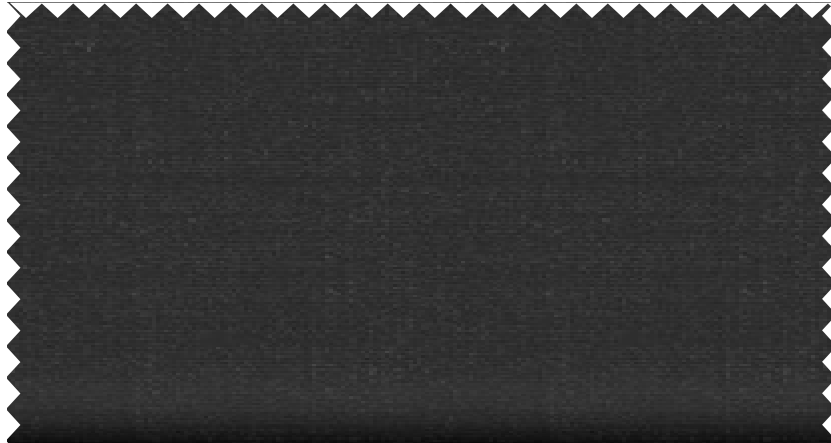


|33394

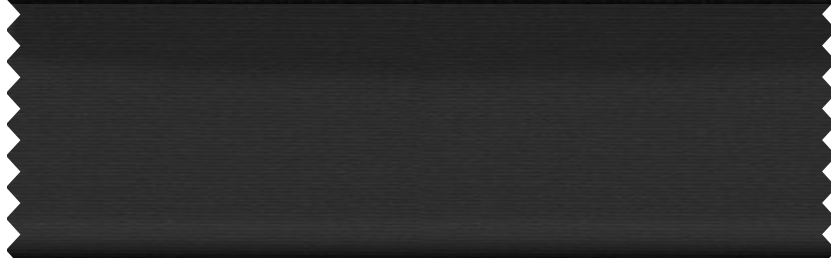




33395



33396



33397



33398



Art.: Q005 - Twill 3

✂ 43% wool / 55% polyester /

2% stretch

33,5x26 - NM2/70xNM2/70

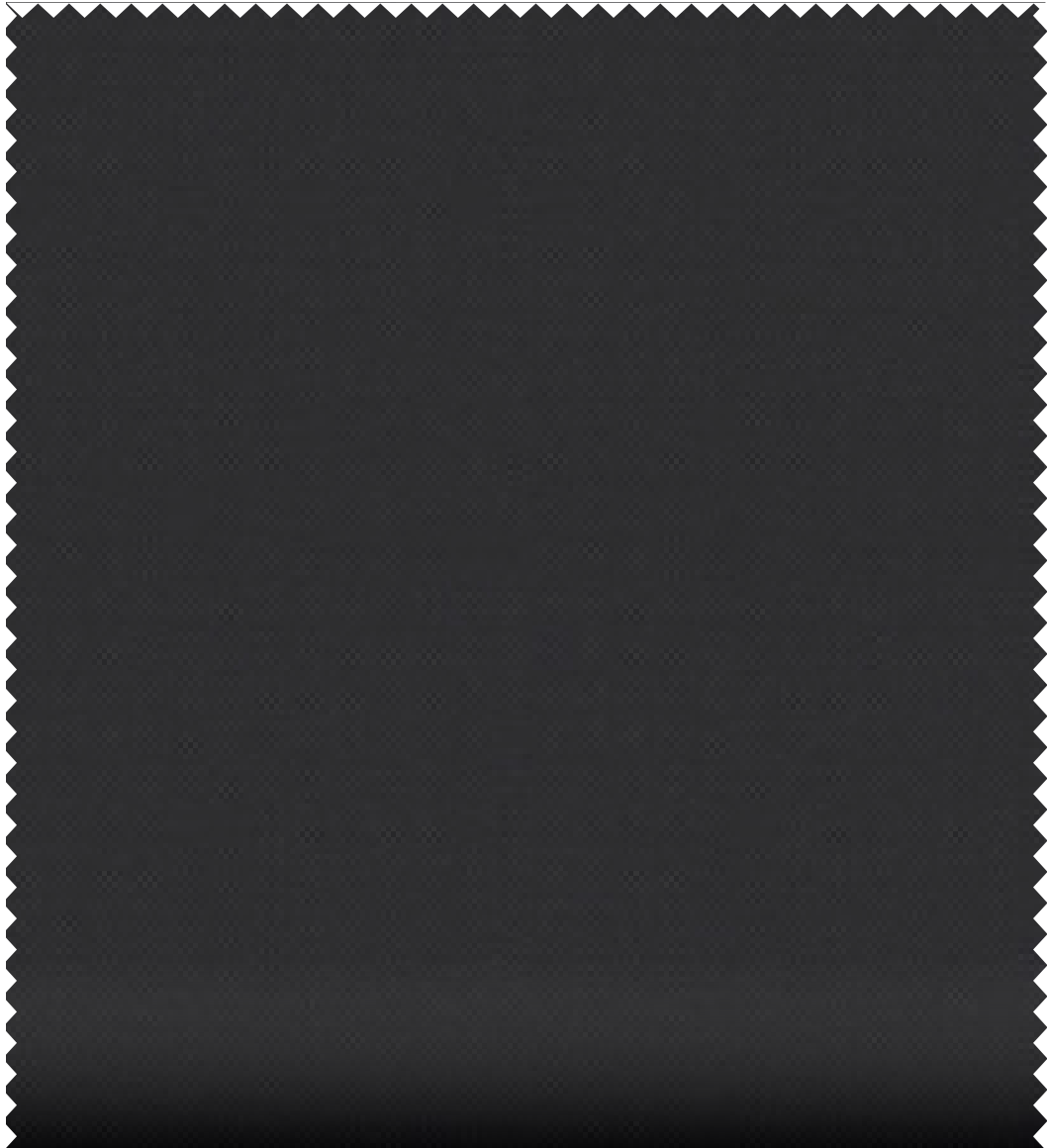
± 195 g/m<sup>2</sup>

± 148 - 150 cm

**weft stretch**



|33399







33400



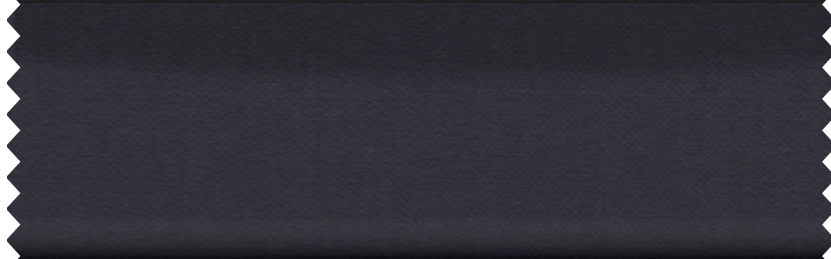
33401



33402



33403



Art.: Q008 - Plain

✂ 43% wool / 55% polyester /

2% stretch

29x23 - NM2/70xNM2/70

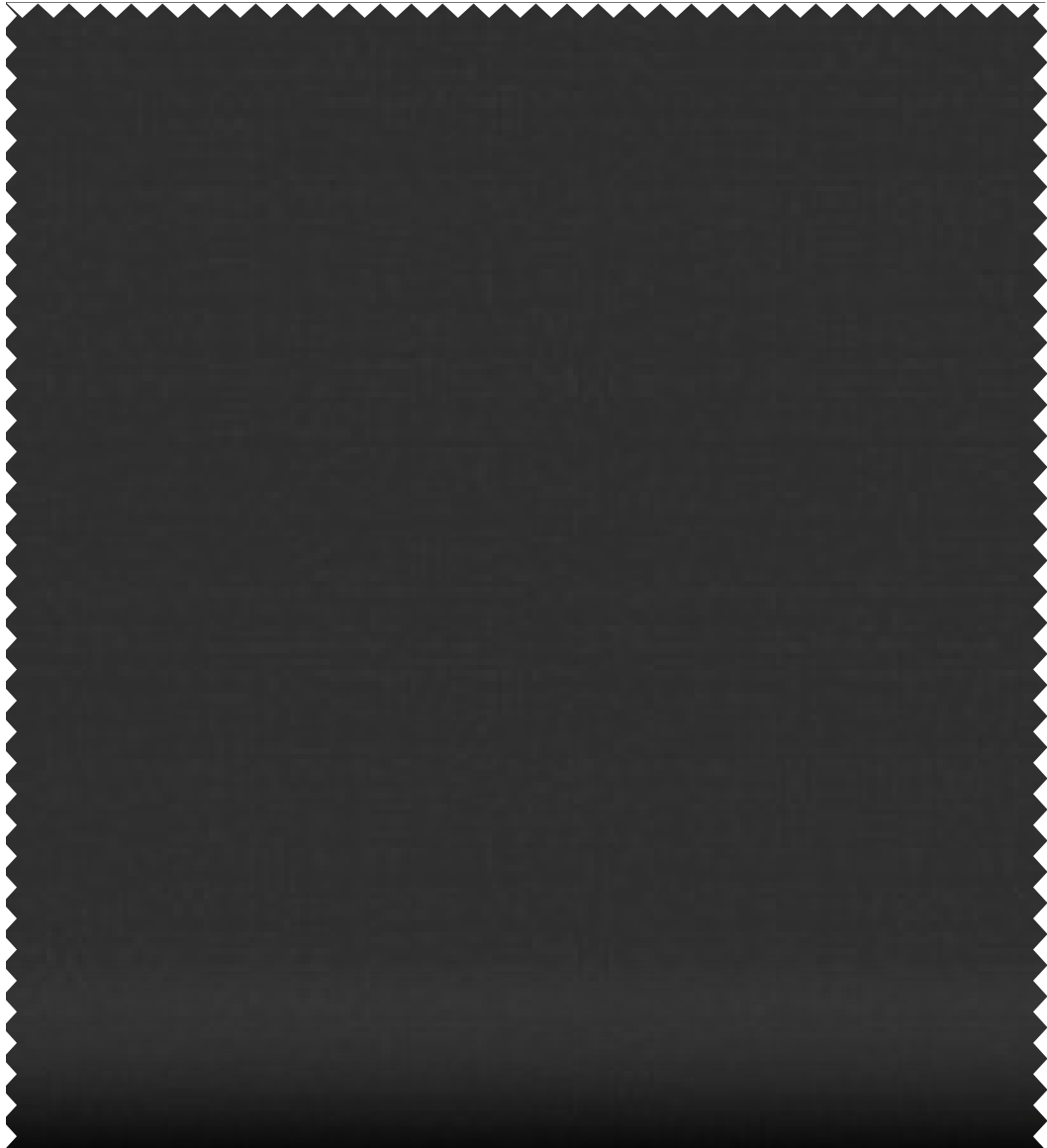
± 180 g/m<sup>2</sup>

± 148 - 150 cm

**weft stretch**



|33406





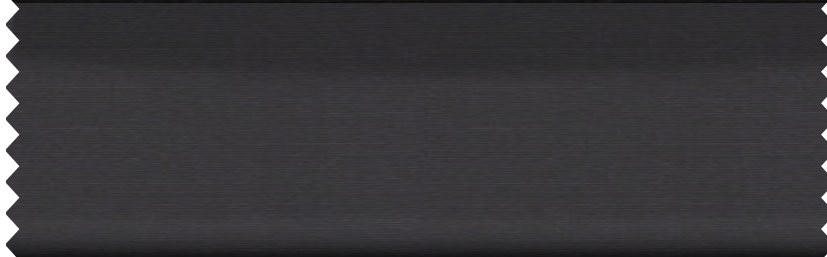
33407



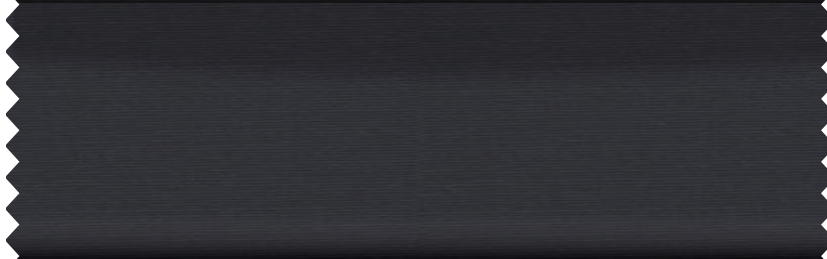
33408



33409



33410



# TOTAL FABRICS

**Quick service**



*Your local partner...*

# Quick service

- Excellent wool/PES (+EA) solid fabrics in plain and twill.
- Perfect weight for corporate solutions (180-220 g/m<sup>2</sup>).
- Stock delivery per roll (+/- 50 meter) in the base colours.

Art.: Q006 - Twill 3

✂ 45% wool / 55% polyester

29x26 - NM2/60xNM2/60

± 190 g/m<sup>2</sup>

± 148 - 150 cm

rigid

**TOTAL**  
FABRICS

WOOL COLLECTION

OEKO-TEX®  
CONFIDENCE IN TEXTILES  
STANDARD 100  
ZHWO 038631 TESTEX  
Tested for harmful substances.  
www.oeko-tex.com/standard100



|33404



Art.: Q007 - Plain

✂ 45% wool / 55% polyester

22x19 - NM2/50xNM2/50

± 175 g/m<sup>2</sup>

± 148 - 150 cm

rigid

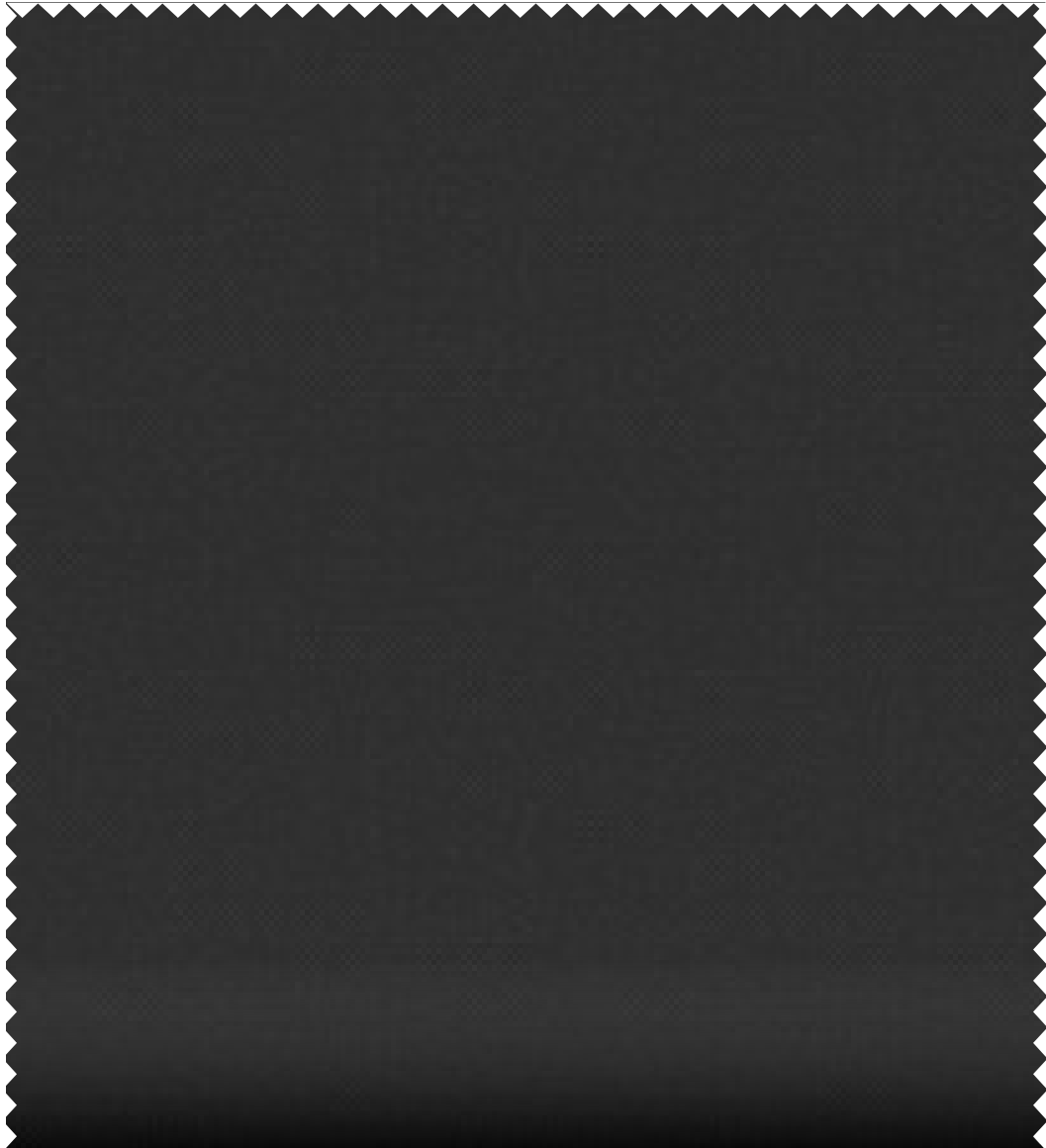
**TOTAL**  
FABRICS

WOOL COLLECTION

OEKO-TEX®  
CONFIDENCE IN TEXTILES  
STANDARD 100  
ZHWO 038631 TESTEX  
Tested for harmful substances.  
www.oeko-tex.com/standard100



|33405





## Contact

Tootal Fabrics (Holland) B.V.

IJzersteden 3, 7547 TB

Enschede, The Netherlands

T: +31 (0) 53 428 6200

E: [webshop@tootal.nl](mailto:webshop@tootal.nl)

W: [www.tootalshop.com](http://www.tootalshop.com)

**The pictures on the previous pages might not represent the true colour and pattern size of the actual fabric. For the best representation it is important to order a sample. Above applies for all PDF colour card pages that you download and print.**

*Your local partner...*